



UNIVERSITY AT ALBANY

State University of New York

FOUNDED 1844



ONE OF THE
"TOP UNIVERSITIES
IN THE WORLD"
QS, 2016



ONE OF THE
"BEST BUSINESS
SCHOOLS"
Princeton Review



ONE OF THE
"BEST UNIVERSITIES
IN THE U.S."
*U.S. News & World Report,
2016*



ONE OF
"AMERICA'S
TOP COLLEGES"
Forbes Magazine



#1 MBA
JOB PLACEMENT
*U.S. News & World Report,
2013 & 2014*



**UNIVERSITY AT ALBANY
OFFICE OF INTERNATIONAL
ADMISSIONS AND
RECRUITMENT**

Science Library G40
1400 Washington Ave.

PH: (518) 591-8172

FAX: (518) 591-8171

uginternational@albany.edu

[albany.edu/
international-admissions](http://albany.edu/international-admissions)



THE WORLD WITHIN REACH

THE UNIVERSITY AT ALBANY OFFERS A WORLD OF OPPORTUNITY TO OVER 17,300 STUDENTS, INCLUDING 1,800 INTERNATIONAL STUDENTS FROM MORE THAN 90 COUNTRIES




ESTIMATED COSTS

UNDERGRADUATE

-  \$25,845 Tuition/Fees
-  \$12,992 Living Expenses

Total: **\$38,837**

GRADUATE

-  \$25,576* Tuition/Fees
-  \$10,700 Living Expenses

Total: **\$36,276**

*MBA: \$27,756

Undergraduate students can receive up to

\$5,000



per year in scholarships for all 4 years of study

SAT/ACT suggested



OUR ALUMNI

have found successful careers with companies such as **GOLDMAN SACHS, DISNEY, GE, IBM, MICROSOFT, BLOOMBERG, SAMSUNG, APPLE, MORGAN STANLEY, LOCKHEED MARTIN, DELOITTE,** and more



REQUIREMENTS FOR UNDERGRADUATE ADMISSION

- A **GRADE POINT AVERAGE** of **85%** (3.0) is recommended for **FRESHMEN APPLICANTS**.
- B average or **2.5 GPA TO TRANSFER** for most programs
- **SAT SCORES** are **STRONGLY ENCOURAGED** for scholarship consideration
- Fulfill **ENGLISH PROFICIENCY** requirement
- **OFFICIAL TRANSCRIPT(S)**
- **FINANCIAL INFORMATION** as requested

ENGLISH PROFICIENCY REQUIREMENT

One of the following:

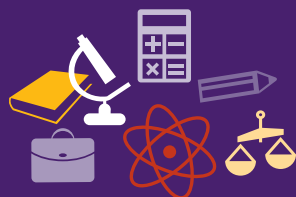
- TOEFL 79 ibt / 213 cbt / 550 pbt
- IELTS 6.0
- ELS 112
- SAT 400 critical reading
- Completion of UAlbany IELP program



We offer **CONDITIONAL ESL UNDERGRADUATE ADMISSION**

Learn more at albany.edu/ugaielp

4 and 8 week sessions available



We offer **30+** **ACCELERATED** bachelor's/master's programs



APPLY NOW

For more information on how to apply, visit albany.edu/international-admissions



UNDERGRADUATE DEGREE PROGRAMS

Accounting (BS)
Actuarial & Mathematical Sciences (BS)

Africana Studies (BA)

Anthropology (BA)

Art (BA)

Art History (BA)

Atmospheric Science (BS)

Biology (BA & BS)

Biochemistry & Molecular Biology (BS)*

Bio-Instrumentation (BS)*

Business Administration (BS)

Concentrations in:

Entrepreneurship

Financial Analyst Honors Program

Information Technology Management (ITM)

Management (combined concentrations only)

Marketing

Chemistry (BA & BS)

BS Concentrations in:

Chemistry Emphasis

Chemical Biology Emphasis

Forensic Chemistry Emphasis

Chinese Studies (BA)

Communication & Rhetoric (BA)

Computer Engineering (BS)

Computer Science (BA & BS)

Computer Science & Applied Mathematics (BS)

Criminal Justice (BA)

Digital Forensics (BS)

Documentary Studies (BA)*

East Asian Studies (BA)

Economics (BA & BS)

Emergency Preparedness, Homeland Security & Cybersecurity (BA)

English (BA)

Environmental Science (BS)*

Concentrations in:

Ecosystems Specialization

Climate Change Specialization

Geography Specialization

Sustainability Science and Policy Specialization

Financial Market Regulation (BS)*

Geography (BA)

Globalization Studies (BA)*

History (BA)

Concentrations in:

United States

Europe

World

Human Biology (BS)

Human Development (BS)

Informatics (BS)

Concentrations in:

Interactive User Experience

Cybersecurity

Social Media

Data Analytics

Software Development

Information Technology (offered fully online)

Interdisciplinary Studies (BA & BS)

Japanese Studies (BA)

Journalism (BA)

Latin American Studies (BA)

Linguistics (BA)

Mathematics (BA & BS)

Medieval & Renaissance Studies (BA)*

Music (BA)

Philosophy (BA)

Physics (BS)

Political Science (BA)

Concentrations in:

American Politics

Global Politics

Political Theory

Public Law

Psychology (BA)

Public Health (BS)*

Public Policy (BA)

Concentrations in:

Environmental Policy

Gender, Race, and Society

Human Services: Health, Education and Labor

Law and Civil Rights

Local Government

Philosophy and Ethics

Politics

Quantitative Tools

Regulation and Public Finance

Technology and Policy

Urban Issues

World Affairs

Religious Studies (BA)*

Social Welfare (BS)

Sociology (BA)

Spanish (BA)

Concentrations in:

Hispanic Literatures and Cultures

Spanish Language, Linguistics, Teaching

Theatre (BA)

Urban Studies & Planning (BA)

Women's, Gender & Sexuality Studies (BA)

*Interdisciplinary Studies concentration



UNIVERSITY AT ALBANY

State University of New York

albany.edu/international-admissions

GRADUATE DEGREE PROGRAMS

College of Arts and Sciences

Africana Studies (MA)
Anthropology (MA, PhD)
Art- Studio Art (MA, MFA)
Atmospheric Science (MS, PhD)
Behavioral Neuroscience (PhD)
Biodiversity, Conservation, and Policy (MS)
Biology (MS, PhD)
Biology-Forensic (MS)
Chemistry (MS, PhD)
Chemistry- Applied (MS)
Communication (MA, PhD)
Communication/TESOL (non-certification) (MA, MS)
Economics (MA, PhD)
Economic Forecasting (CGS)
English (MA, PhD)
English/Information Science Dual Degree (MA, MS)
Geographic Information Systems (CGS)
Geography and Planning (MA)
History (MA, PhD)
History- Public (MA)
History/ Information Science Dual Degree (MA, MS)
Latin American and Caribbean Studies (MA, CGS)
Liberal Studies (MA)
Mathematics (MA, PhD)
Philosophy (MA, PhD)
Philosophy PhD with MS in Bioethics Dual Degree (PhD/MS)
Physics (MS, PhD)
Psychology- Industrial-Organizational (MA, PhD)
Psychology-Clinical (PhD)
Psychology-Cognitive/Developmental (PhD)
Psychology-Social/Personality (PhD)
Social Studies (MA)
Sociology (MA, PhD)
Sociology PhD with Women's, Gender, and Sexuality Studies (PhD/MA)
Sociology-Demography (CGS)
Spanish (MA, PhD)
Spanish-Latin American and Caribbean Studies Concentration (MA)
Urban Policy (MRP)
Urban and Regional Planning (MRP)
Urban and Regional Planning/JD (with Albany Law) (MRP)
Women's, Gender, and Sexuality Studies (MA)

Women's, Gender, and Sexuality Studies
MA with Sociology PhD (MA/PhD)
Women and Public Policy (CGS)

School of Business

Accounting-2 year program (MS)
Master's in Business Administration (MBA)
Forensic Accounting (MS)
Information Security (CGS)
Professional Accountancy (MS)
Taxation (MS)
Tax Practice (MS)

College of Engineering and Applied Sciences

Computer Science (MS, PhD)
Information Science (MS, CAS, PhD)
Professional Science Management (AGC)
English MA/Information Science MS Dual Degree (MS/MA)
History MA/Information Science MS Dual Degree (MS/MA)

College of Emergency Preparedness, Homeland Security and Cybersecurity (Certificate Program)

School of Criminal Justice

Criminal Justice (MA, PhD)
Dual Degree with Social Welfare (MA, MSW)

School of Education

Counseling Psychology (PhD)
Curriculum and Instruction (CAS)
Curriculum-Online Teaching and Learning (CSG)
Curriculum Development and Instructional Technology (MS)
Curriculum and Instruction (PhD)
Education Administration and Policy Studies (MS, PhD)
Educational Research (CAS)
Educational Psychology and Methodology (MS, PhD)
English as a Foreign Language (CGS)
General Educational Studies (MS)
Mental Health Counseling (MS)
Teaching English to Speakers of Other Languages (Non-Certification) (MS)
TESOL (Non-Certification) with Communication MA (MS/MA)
Reading (MS, CAS, PhD)

Rockefeller College of Public Affairs & Policy

International Affairs (MIA)
International Health and Human Rights (CGS)
Non-Profit Management and Leadership (CGS)
Planning and Policy Analysis (CAS)
Political Science (MA, PhD)
Public Administration and Policy (MPA, PhD)
Public Administration Dual Degree with Albany Law (MPA/JD)
Public Sector Management (CGS)
Women and Public Policy (CGS)

School of Public Health

Biomedical Sciences (MS, PhD)
Biometry and Statistics (MS, PhD)
Environmental Health (MS, PhD)
Epidemiology (MS, PhD)
Global Health Studies (CGS)
Health Disparities (CGS)
Public Health (MPH, DrPH)
Public Health MPH with Albany Med MD (MPH, MD)
Public Health MPH with Social Welfare MSW (MPH, MSW)
Public Health Fundamentals (CGS)
Public Health Surveillance and Preparedness (CGS)

School of Social Welfare

Social Work (MSW, PhD)
Social Work MSW with Criminal Justice (MSW/MA)
Social Work MSW with Albany Law (MSW/JD)
Social Work MSW with Public Health (MSW/MPH)
Social Work MSW with Social Welfare PhD Combined Program (MSW/PhD)

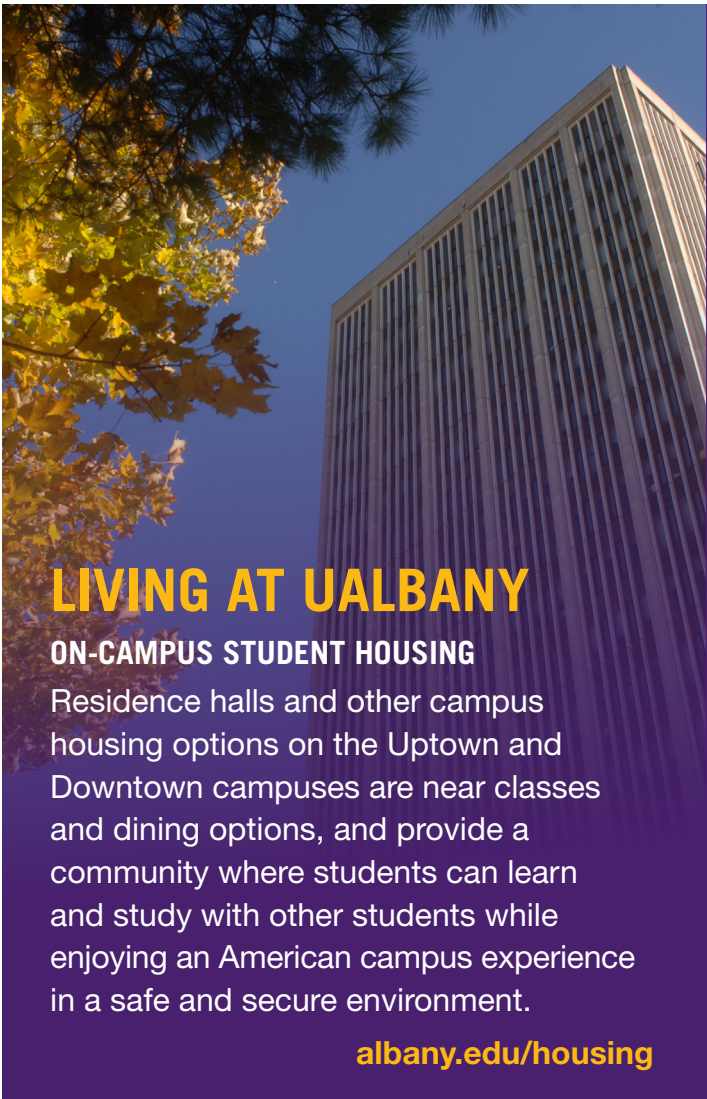
AGC=Advanced Graduate Certificate; BA=Bachelor of Arts; BS=Bachelor of Science; CAS=Certificate of Advanced Study; CGS=Certificate of Graduate Study; DrPH=Doctor of Public Health; JD=Juris Doctor; MA=Master of Arts; MD=Medical Doctor; MFA=Master of Fine Arts; MIA=Master of International Affairs; MPA=Master of Public Affairs; MPH=Master of Public Health; MRP=Master of Regional Planning; MS=Master of Science; MSW=Master of Social Work; PhD=Doctor of Philosophy; PsyD=Doctor of Psychology



UNIVERSITY AT ALBANY

State University of New York

albany.edu/international-admissions



LIVING AT UALBANY

ON-CAMPUS STUDENT HOUSING

Residence halls and other campus housing options on the Uptown and Downtown campuses are near classes and dining options, and provide a community where students can learn and study with other students while enjoying an American campus experience in a safe and secure environment.

albany.edu/housing

AMERICAN HOMESTAYS

Students can improve their English and experience real American family home life and culture through American Homestays.

azhomestay.com

EXPLORE UALBANY

UALbany has more than 200 student clubs and organizations. Cheer UAlbany to victory in basketball, football, baseball and many other spectator sports. UAlbany has a wide variety of cultural, musical and artistic events.



APARTMENTS

Students may live in off-campus apartments.

albany.edu/livingoffcampus



IDEAL LOCATION: THE STATE OF NEW YORK

New York is world-famous for culture, the arts, media, business, history, entertainment, fashion, international diplomacy, theater and world-class universities. Our campus is within reach of exceptional skiing, snowboarding and hiking in the Adirondacks, Catskills and Berkshires. Many landmarks are well-known and New York hosts several of the world's ten most-visited tourist attractions: Niagara Falls, Central Park, Times Square and Grand Central Station. Visiting the Statue of Liberty and Wall Street are other must-do experiences!



FROM BUSINESS TO BIOLOGY AND EVERYTHING IN BETWEEN

As a major public research university, the possibilities are virtually endless: Nine schools and colleges offer majors in more than 50 fields and minors in over 60. You can also design your own “interdisciplinary” major. Graduate programs in all these fields, as well as education, enrich your academic and research options and also offer accelerated paths to advanced study.



TOP-NOTCH ACADEMIC FACILITIES

The University Libraries have more than two million volumes and are among the nation’s top research libraries. We have wonderful on-campus venues for music, dance, and theatre, and state-of-the-art facilities in our Life Sciences Research Building, Cancer Research Center, and new \$64 million Massry Center for Business.

IN THE HEART OF THE STATE CAPITAL

We are located in the heart of New York’s Capital Region, home to 20 universities and colleges, 65,000 students, and nearly 800,000 people.



ALBANY LAW



UNIVERSITY
AT ALBANY

State University of New York

ALBANY LAW-UALBANY AFFILIATION

Albany Law School and the University at Albany work together to combine programs and activities to benefit students from both schools. As a small, intimate law school, the collaboration allows the law school to draw on the strengths of a major research university.

- 3+3 Accelerated
- Collaborative Degree Programs

A CITY RICH WITH OPPORTUNITY

UAlbany internships provide real-world experience in government, business, criminal justice, public health, technology, and more. Our research program attracted millions in expenditures last year. It also involved many of our undergraduates in significant research – giving them an edge in the competition for graduate schools and the job market.

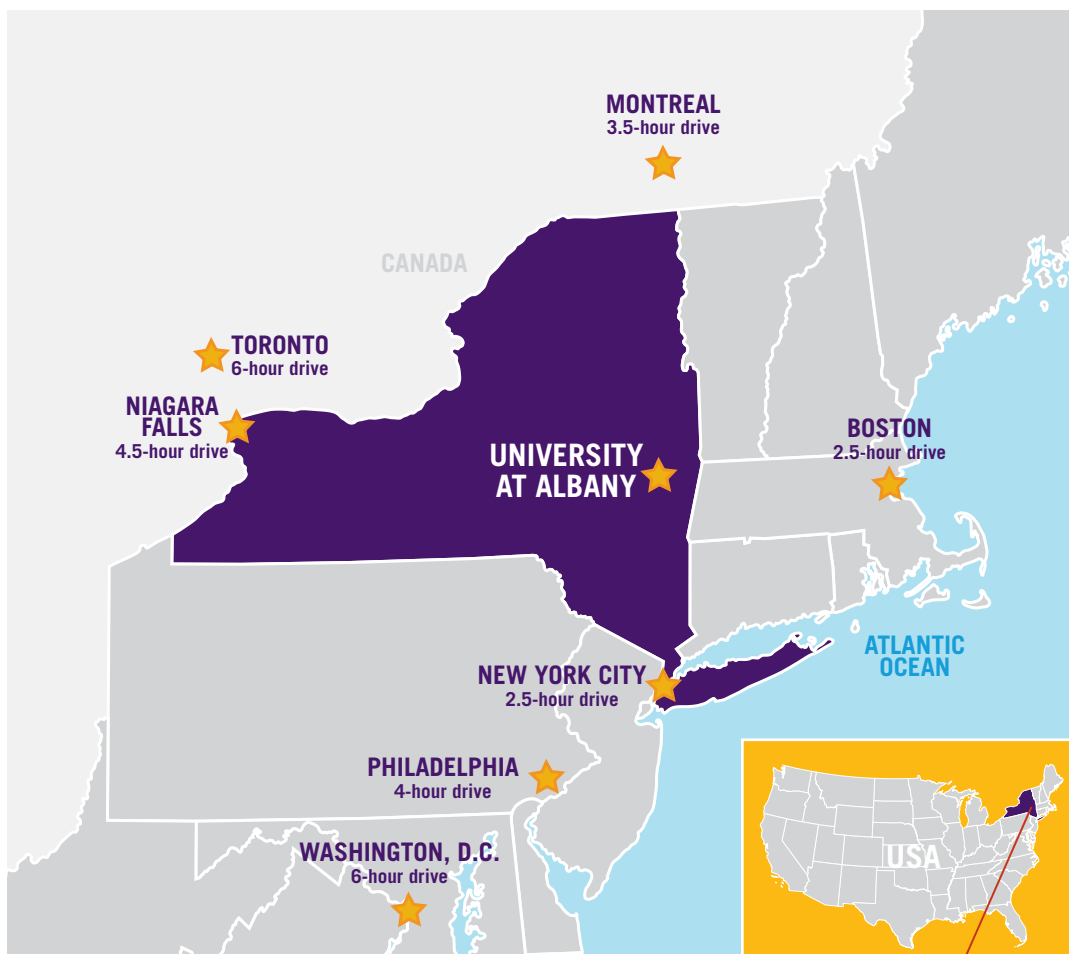


UNIVERSITY AT ALBANY

State University of New York

STRATEGIC LOCATION, ENDLESS OPPORTUNITY

The University at Albany is located in the capital of New York State and is just 135 miles north of New York City. Our campus is in the center of New York's fast-growing TechValley, a hotbed of Research and Development, business and entrepreneurial activity. Students can explore nearby attractions including Boston, Niagara Falls and Washington DC.



UNIVERSITY AT ALBANY OFFICE OF INTERNATIONAL ADMISSIONS AND RECRUITMENT

Science Library G40
1400 Washington Ave.
Albany, NY 12222 USA

PH: (518) 591-8172

FAX: (518) 591-8171

uginternational@albany.edu

[albany.edu/
international-admissions](http://albany.edu/international-admissions)

UNIVERSITY AT ALBANY OFFICE OF GRADUATE ADMISSIONS

UAB 121
1400 Washington Ave.
Albany, NY 12222 USA

PH: (518) 442-3980

FAX: (518) 442-3922

graduate@albany.edu

albany.edu/graduate

UNIVERSITY AT ALBANY INTENSIVE ENGLISH LANGUAGE PROGRAM

Science Library G40
1400 Washington Ave.
Albany, NY 12222 USA

PH: +1 (518) 591-8172

FAX: +1 (518) 591-8171

IELP@albany.edu

albany.edu/ielp

SCHOOL CODES FOR STANDARDIZED TEST

ACT: 2926

SAT, TOEFL and GRE: 2532

THE WORLD WITHIN REACH